

INDEX	
SHEET NO.	SUBJECT
1	Index and Pipe Classification Table
2	Miscellaneous Pipe Installation Details

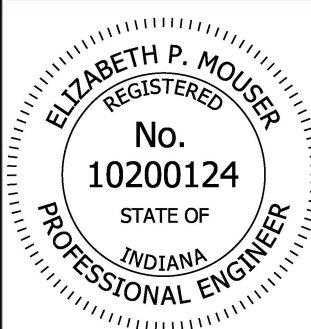


Material	Pipe Type				
	1	2	3	4	5
Non-Reinforced Concrete Pipe, Class 3 (S)	x	x	x		
Non-Reinforced Concrete Pipe				x	
Reinforced Concrete Pipe (S)	x	x	x		
Reinforced Concrete Horizontal Elliptical Pipe (S)	x	x	x		
Corrugated Steel Pipe (C)	x		x		x
Polymer Precoated Galvanized Corrugated Steel Pipe (C)	x		x		x
Polymer Precoated Galvanized Corrugated Steel Pipe Type IA (S)	x	x	x		x
Fully Bituminous Coated and Lined Corrugated Steel Pipe (S)		x			x
Corrugated Steel Pipe-Arch (C)	x		x		x
Polymer Precoated Galvanized Corr. Steel Pipe Arch Type IIA (S)	x	x	x		x
Fully Bituminous Coated and Lined Corrugated Steel Pipe-Arch (S)		x			x
Polymer Precoated Galvanized Corrugated Steel Pipe-Arch (C)	x		x		x
Corrugated Aluminum Alloy Pipe (C)	x		x		x
Corrugated Aluminum Alloy Pipe-Arch (C)	x		x		x
Structural Plate Steel Pipe (C)	x		x		
Structural Plate Steel Pipe-Arch (C)	x		x		
Structural Plate Aluminum Alloy Pipe (C)	x		x		
Structural Plate Aluminum Alloy Pipe-Arch (C)	x		x		
Spiral Rib Steel Pipe (SS)	x		x		x
Clay Pipe, Extra Strength (S)	x	x	x		
Clay Pipe				x	
Perforated Clay Pipe				x	
Concrete Drain Tile				x	
Clay Drain Tile				x	
Corrugated Polyethylene Pipe, Type SP				x	
Corrugated Polyethylene Pipe, Type (S)	x	x	x	x	x
Corrugated Polyethylene Drainage Tubing				x	
Corrugated Polypropylene Pipe (S)	x	x	x		x
Profile Wall PVC Pipe (S)	x	x	x	x	x

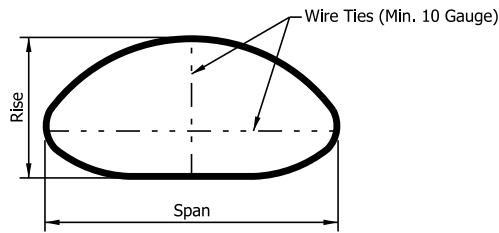
**NOTES:**

- The prescribed uses for the pipe types are as follows.
  - Type 1 Pipe - Culverts under mainline pavement and public road approaches.
  - Type 2 Pipe - Storm sewer pipe.
  - Type 3 Pipe - Culverts under driveways and field entrances.
  - Type 4 Pipe - Drain tile and longitudinal underdrains.
  - Type 5 Pipe - Broken back and other installations requiring coupled pipe.
- See to Standard Drawings E 715-PHCL-01 through E 715-PHCL-24 and E 717-PHCL-01 through E 717-PHCL-10 for allowable heights of cover for various pipe materials except Type 4 pipes.
- See to Standard Drawings E 715-PSLC-01 through E 715-PSLC-03 for required pipe service life criteria.
- Any pipe material which is in accordance with the designated pipe type, acceptable for height of cover conditions, and conforms to service life criteria may be installed.

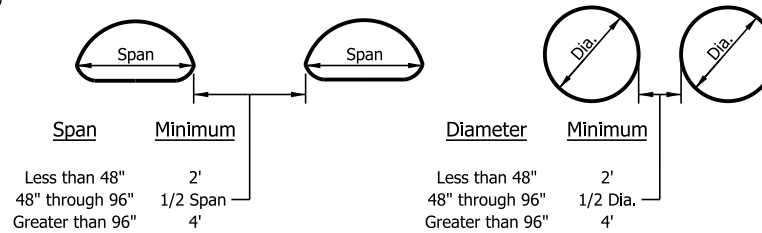
**LEGEND:**

- (C)- Corrugated Interior Culvert Pipe  
 (S)- Smooth Interior Culvert or Storm Sewer Pipe  
 (SS)- Semi-Smooth Interior Culvert Pipe

<b>INDIANA DEPARTMENT OF TRANSPORTATION</b>	
<b>INDEX AND PIPE CLASSIFICATION TABLE</b>	
<b>SEPTEMBER 2026</b>	
<b>STANDARD DRAWING NO.</b>	<b>E 715-PIPE-01</b>
	 2/26/2026 DESIGN STANDARDS ENGINEER      DATE
	 04/08/2026 CHIEF ENGINEER      DATE



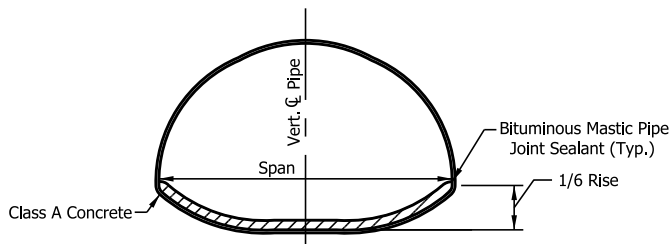
**STEEL PIPE-ARCH SECTIONS  
END STABILIZATION OF 3" x 1" CORRUGATED ①**



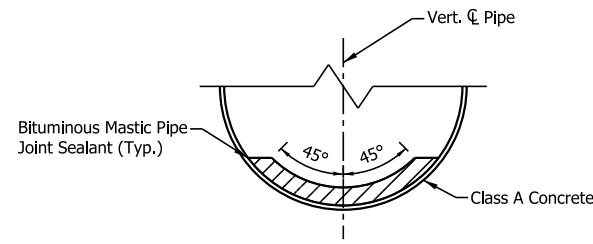
**MULTIPLE INSTALLATION**

**NOTES:**

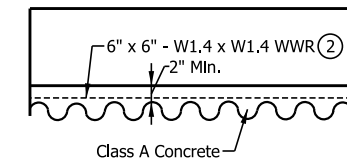
- ① In order to maintain their manufactured shape, all 3" x 1" corrugated steel pipe-arch sections shall have wire ties attached at each end as shown in the detail. The wire ties shall be attached across the largest vertical and horizontal dimension of the pipe-arch. The wire ties shall be installed by the manufacturer and shall remain in place until the on-site installation is complete.
- ② WWR shall be wired to every second circumferential bolt and every twelfth longitudinal bolt.



**STRUCTURAL PLATE  
PIPE-ARCH CULVERT  
ELEVATION**



**STRUCTURAL PLATE  
PIPE CULVERT**



**TYPICAL LONGITUDINAL SECTION**

**CONCRETE FIELD PAVED INVERT DETAILS**

INDIANA DEPARTMENT OF TRANSPORTATION	
MISCELLANEOUS PIPE DETAILS	
SEPTEMBER 2017	
STANDARD DRAWING NO. E 715-PIPE-02	
	<i>/s/ Elizabeth W. Phillips</i> 03/22/17 DESIGN STANDARDS ENGINEER DATE
	<i>/s/ John Leckie</i> 04/10/17 CHIEF ENGINEER DATE